



**JN PIPING & EQUIPMENT CO., LTD.**

Add: No. 23, Xingchang Street, Yingkou, Liaoning Province, P.R. China

Add: Chengshan Road, Jiangyin, Jiangsu Province, P.R. China

Website : [www.jnfittings.com](http://www.jnfittings.com) Email : [sales@jnfittings.com](mailto:sales@jnfittings.com)

Tel : +86-417-3500 619 +86-510-8169 5666

Fax : +86-417-3500 329 +86-510-8613 1971

**JN PIPING**

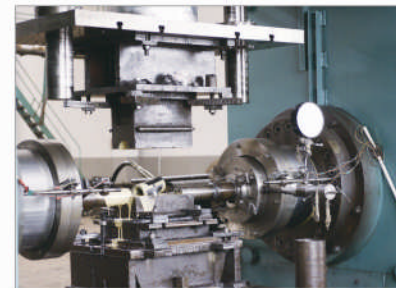
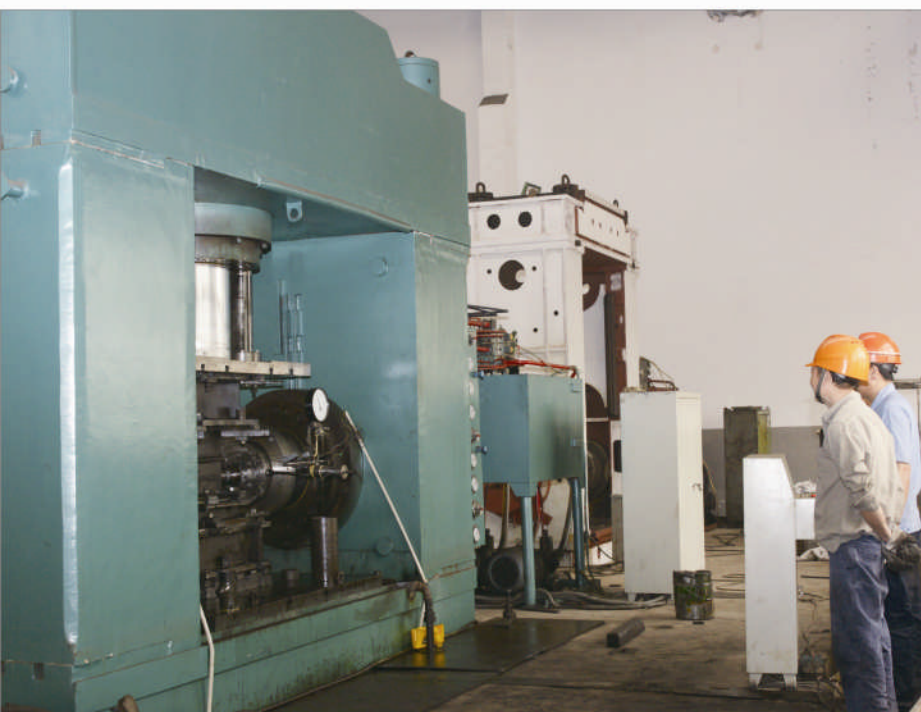
▶▶ PIPE FITTINGS

▶▶ FLANGES

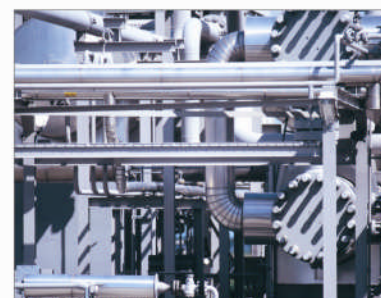
*BETTER FITTINGS, BEST SERVICES*

[www.jnfittings.com](http://www.jnfittings.com)





## Company Profile



JN PIPING & EQUIPMENT CO., LTD. is leading manufacturer & exporter on high quality Butt-Welding Pipe Fittings and Flanges with stainless steel, duplex steel, carbon steel, alloy steel, low temperature steel since 2002. Mainly sales in European Market, USA, Russia, Iran, UAE, South America, Australia, Middle East, Africa, Japan & Korea.

Founded in April 6th, 2002, JN producing all kinds of Pipe Fittings & Flanges with specification range of 1/2"~60" (DN15~DN1500), such as Elbows, Tees, Reducers, Caps, Lap Joint Stub Ends, Seamless Cross, 3D, 5D, 10D, 20D Bends, Returns, wall thickness SCH5, SCH10 upto SCH160 & XXS, and start producing pipe fittings machine since 2008.

JN produce according to standards of ASME, DIN, GOST, TY102488, JIS, BS, GB, SH, HG etc, as well as technical drawings provided by customers. Our products are widely applied in industry of petroleum, chemical, electric power, natural gas, shipbuilding, metallurgy, mechanical, textile, food, medical, etc.

Better Fittings, Best Services is our company principle. We always focus on quality control & customer services, and experienced in dealing with overseas partners. We are ISO9001 & PED certified by TUV since 2003. Up to now, with our super quality, punctual delivery and excellent service, full range of pipeline products, the company has established long-term stable cooperation relationship with our clients.

As your reliable business partner, we hope to continue satisfy you in every aspect.





**JN PIPING & EQUIPMENT CO., LTD.** controls the entire manufacturing process.

All fittings & flanges are subject to strict in-process inspection at each stage of the production process, from starting material handling to finished product delivery. They are visually examined for conformity to JNCO specifications, checked and tested in accordance with applicable standards.

## Starting Material Receiving Inspections

1. Dimensional Inspections at the end of the material receiving.
2. Visual Inspection - Surface Inspection to ensure the material is suitable for producing.
3. Test of Chemical composition and Tensile properties - to ensure the items are exactly according with the applicable standards.

## In-Process Inspections

- Visual Inspection
- Dimensional Inspection
- Shape Inspection
- Hardness Test, Liquid Penetrant, NDT, MT, UT
- Temperature Check
- Processing Conditions Check
- Material Identification ( In-process Card )
- 100% X-Ray Test
- 100% Inspection
- Other Inspections

## Final Inspections

1. Visual Inspection  
Surfaces are checked to confirm they are smooth and do not bear any harmful Defects.
2. Dimensional Inspection  
To ensure that all fittings and flanges are in conformity with relevant standards.
3. Special Inspection  
Non-destructive Test, Mechanical test or other test are performed as per customer's.

## Facilities

**JN PIPING & EQUIPMENT CO., LTD.** has advanced manufacturing process and facilities, strict inspection equipments with quality assurance system adopting internationally commonly used ISO 9001:2008 standard. Nowadays, the company owns plate cutting machines, plate rolling machines, 610 medium frequency elbow bending machine, bevelling machine of DN1200, pipe bending machine, Auto-welding machine. 12" Tee cold forming machine, 8" stainless steel Elbow cold forming machine, 2000T pressure machine, 1000T, 500T four-column hydraulic press machine, heat treatment furnace and sand blasting, shot blasting, forging machine, lathe, CNC etc., magnetic inspection and other inspection equipments. With engineering technicians and technical operators for manufacturing pipe fittings and flanges many years, the company has the process design, fabrication, welding, forging, heat treatment, pickling, product testing and inspection abilities.



## Fittings - Seamless & Welded

- Size: 1/2" to 60"
- Standard: ASTM A234, A403, A420, A860, A815, EN10253, JIS2311,2312,2313 / ANSI B16.9, DIN2605, 2615, 2616, 2617, MSS SP75, TY-102488, GOST17375, 17378, 17379, 17380, AWWA C208, BS4504, AS2129, API 6A
- Carbon Steel: WPB,St37.0,St35.8, St45.8, PG370, PT410, SS400, K42, K46, K48, K50, K52, K54, K56, K58, K60
- Stainless Steel: WP304, WP304L, WP316, WP316L, WP321, 1.4301, 1.4306, 1.4401, 1.4571, SUS304,304L, 316, 316L, 321
- Alloy Steel: WPL6, WP5, WP9, WP11, WP22, WP91
- Wall Thickness: Sch10 to Sch160, XXS

## Flanges

- Size: 1/2" to 60"
- Standard: A105, A181, A182, ANSI B16.5, B16.36, B16.47, B16.48, API590, API605, DIN, JIS, BS, EN, AS
- Carbon Steel: A105, A105N, C22.8
- Stainless Steel: A182 F304, F304L, F316, F316L, F321, F304H, F321H, F347, F347H, F316H
- Alloy Steel: A350 LF2, LF3, A182 F5, F9, F11, F22, F91, A694 F42, F52, F60, F65, F70
- Pressure: 150lbs to 2500lbs

## Forged Fitting

- Size: 1/2" to 4"
- Standard: ANSI B16.11, MSS SP79, MSS SP83, MSS SP95, MSS SP97, JIS2316
- Carbon Steel: A105, A105N, C22.8
- Stainless Steel: A182 F304, F304L, F316, F316L, F321, F304H, F321H, F347, F347H, F316H
- Alloy Steel: A350 LF2, LF3, A182 F5, F9, F11, F22, F91, A694 F42, F52, F60, F65, F70
- Pressure: 2000lbs, 3000lbs,6000lbs, 9000lbs
- Weldolet size upto 40"



# Applicable Standards

**ASME Standards**  
 B16.5 Pipe Flanges and Flanged Fittings NPS 1/2 through NPS Metric/inch Standard  
 B16.9 Factory-Made Wrought Steel Butt-Welding Fittings  
 B16.28 Wrought Steel Butt-Welding Short Radius Elbows and Returns  
 B16.36 Orifice Flange  
 B16.47 Industry Standard and AWWA Flanges  
 B16.48 Line Blanks NPS 1/2 through NPS 24  
 B16.25 Butt-Welding Ends  
 B36.10 Welded and Seamless Wrought Steel Pipe  
 B36.19 Stainless Steel Pipe

**ASTM Standards**  
 A234 Piping Fittings of Wrought Carbon Steel and Alloy Steel for Moderate and High Temperature Service  
 A105 Carbon Steel Forgings for Piping Applications  
 A106 Seamless Carbon Steel Pipe for High Temperature Service  
 A182 Forged or Rolled Alloy-Steel Pipe Flanges, Forged Fittings, and Valves and Parts for High Temperature service  
 A213 Standard specification for seamless ferritic and austenitic alloy-steel boiler, superheater, and Heat-Exchanger tubes  
 A269 Standard specification for seamless and welded austenitic stainless steel tubing for general service  
 A312 Standard specification for seamless and welded austenitic stainless steel pipes  
 A403 Wrought Austenitic Stainless Steel Piping Fittings  
 A420 Piping Fittings or Wrought Carbon Steel and Alloy Steel for Low Temperature Service  
 A815 Wrought Ferritic, Ferritic/Austenitic, and Martensitic Stainless Steel Piping Fittings  
 A860 Wrought High-Strength Ferritic Steel Butt-Welding Fittings

**MSS Standards**  
 SP-43 Wrought Stainless Steel Butt-Welding Fittings  
 SP-75 Specification for High-Test, Wrought, Butt-Welding Fittings  
 SP-79 Socket Welding Reducer Inserts  
 SP-87 Factory-Made Butt-Welding Fittings for Class 1 Nuclear Piping Applications  
 SP-97 Integrally Reinforced Forged Branch Outlet Fittings - Socket Welding, Threaded, And Butt-welding Ends

**AWWA Standards**  
 C208 Dimensions for Fabricated Steel Water Pipe Fittings

**GOST Standards**  
 GOST17375,17376,17378,17379,17380 GOST30753

**TU 102-488**  
 ДЕТАЛИ СОЕДИНИТЕЛЬНЫЕ И УЗЛЫ ДЛЯ МАГИСТРАЛЬНЫХ ГАЗОПРОВОДОВ НА Pp ДО 9.8 МПа (100кгс/см2)

**JIS Standards**  
 B2220 Steel Welding Pipe Flanges  
 B2311 Steel Butt-Welding Pipe Fittings for Ordinary Use  
 B2312 Steel Butt-Welding Pipe Fittings  
 B2313 Steel Plate Butt-Welding Pipe Fittings  
 G3452 Carbon Steel Pipes for Ordinary Piping  
 G3454 Carbon Steel Pipes for Pressure Service  
 G3457 Arc Welded Carbon Pipes

**DIN Standards**  
 2605-1 Steel Butt-Welding Pipe Fittings; Elbows and Bends with Reduced Pressure Factor  
 2605-2 Steel Butt-Welding Pipe Fittings; Elbows and Bends for use at full service  
 2609 Steel Butt-Welding Pipe Fittings; Technical Delivery Conditions  
 2615-1 Steel Butt-Welding Pipe Fittings; Tees with Reduced Pressure Factor  
 2615-2 Steel Butt-Welding Pipe Fittings; Tees for Use at Full Service Pressure  
 2616-1 Steel Butt-Welding Pipe Fittings; Eccentric Reducers with Reduced Pressure Factor  
 2616-2 Steel Butt-Welding Pipe Fittings; Reducers for Use at Full Service Pressure  
 2617 Steel Butt-Welding Pipe Fittings; Caps  
 1626 Welded Circular Unalloyed Steel Tubes Subject to Special Requirements; Technical Delivery Conditions  
 1629 Seamless Circular Unalloyed Steel Tubes Subject to Special Requirements; Technical Delivery Conditions  
 17175 Seamless Tubes of Heat-Resistant Steels; Technical Conditions of Delivery  
 50049 Materials Testing Certificates

**EN (European) Standards**  
 10204 Inspection Documents for Metallic Products  
 10253-1 Butt-Welding Pipe Fittings; Wrought Carbon Steel for General Use and Without Specific Inspection Requirements  
 1092-1 Flanges and their Joints, Circular Flanges for Pipe, Valves, Fittings and Accessories, PN Designated. Part 1: Steel Flanges

**BS (British) Standards**  
 BS 4504 Circular flanges for pipes, valves and fittings  
 BS 10 Flanges and bolting for pipes, valves and fittings

**NFE (France) Standards**  
 NFE29203 Industrial pipework, non alloy, alloy, austenitic stainless steel flanges and collars, terminology specification  
 NFE49117 Steel tubes, seamless plain end tubes for pipe-lines and other uses. ferritic and austenitic stainless  
 Dimensions - Technical delivery conditions

**AS (Australia) Standards**  
 AS2129 Flanges for pipes, valves and fittings  
 AS4087 Metallic flanges for waterworks purpose

**SABS (South Africa Bureau) Standards**  
 SABS 1123 Specification for Pipe flanges

# WALL THICKNESS SCHEDULES

SIZE	OUTSIDE DIAMETER			ANSI															DIN			JIS									
	DN	INCH	MM	S5S	S10S	S20S	S40S	S80S	S5	S10	S20	S30	STD	S40	S60	XS	S80	S100	S120	S140	S160	XXS	S1	S2	S3	S4	S5	SGP	LG		
15	1/2	21.3	217	1.65	2.11	2.50	2.77	3.73	1.65	2.11		2.41	2.77	2.77	3.73	3.73	3.73					4.78	7.47	1.6		2	3.2	4	2.8		
20	3/4	26.7	272	1.65	2.11	2.50	2.87	3.91	1.65	2.11		2.41	2.87	2.87		3.91	3.91					5.56	7.82	1.6		2.3	3.2	4	2.8		
25	1	33.4	34	1.65	2.77	3.00	3.38	4.55	1.65	2.77		2.90	3.38	3.38		4.55	4.55					6.35	9.09	2		2.6	3.2	4	3.2		
32	1 1/4	42.2	42.7	1.65	2.77	3.00	3.56	4.85	1.65	2.77		2.97	3.56	3.56		4.85	4.85					6.35	9.70	2		2.6	3.6	4	3.5		
40	1 1/2	48.3	48.6	1.65	2.77	3.00	3.68	5.08	1.65	2.77		3.18	3.68	3.68		5.08	5.08					7.14	10.15	2		2.6	4	5	3.5		
50	2	60.3	60.5	1.65	2.77	3.50	3.91	5.54	1.65	2.77		3.18	3.91	3.91		5.54	5.54					8.74	11.07	2		2.9	4.5	5.6	3.8		
65	2 1/2	73	76.3	2.11	3.05	3.50	5.16	7.01	2.11	3.05		4.78	5.16	5.16		7.01	7.01					9.53	14.02	2.3		2.9	5	7.1	4.2		
80	3	88.9	89.1	2.11	3.05	4.00	5.49	7.62	2.11	3.05		4.78	5.49	5.49		7.62	7.62					11.13	15.24	2.3		3.2	5.6	8	4.2		
90	3 1/2	101.6		2.11	3.05	4.00	5.74	8.08	2.11	3.05		4.78	5.74	5.74		8.08	8.08												4.2		
100	4	114.3	114.3	2.11	3.05	4.00	6.02	8.56	2.11	3.05		4.78	6.02	6.02		8.56	8.56					13.49	17.12	2.6		3.6	6.3	8.8	4.5		
125	5	141.3	139.8	2.77	3.40	5.00	6.55	9.53	2.77	3.40			6.55	6.55		9.53	9.53					15.88	19.05	2.6		4	6.3	10	4.5		
150	6	168.3	165.2	2.77	3.40	5.00	7.11	10.97	2.77	3.40		7.11	7.11		10.97	10.97						18.26	21.95	2.6		4	4.5	7.1	11		
200	8	219.1	216.3	2.77	3.76	6.50	8.18	12.70	2.77	3.76		7.04	8.18	8.18		10.31	12.70					20.62	23.01	2.9		4.5	6.3	8	12.5		
250	10	273	267.4	3.40	4.19	6.50	9.27	12.70	3.40	4.19		7.80	9.27	9.27		12.70	15.09					25.40	28.58	2.9		4.5	6.3	8	12.5		
300	12	323.8	318.5	3.96	4.57	6.50	9.53	12.70	3.96	4.57		8.38	9.53	10.31		14.27	17.48					33.32	35.40	2.9		5.6	7.1	10			
350	14	355.6	355.6	3.96	4.78	7.90	9.53	12.70	3.96	6.35		9.53	9.53	11.13		15.09	19.05					31.75	35.71	3.2		3.2	5.6	8	11		
400	16	406.4	406.4	4.19	4.78	7.90	9.53	12.70	4.19	6.35		9.53	9.53	12.70		16.66	21.44					36.53	40.49	3.2		3.2	6.3	8.8	12.5		
450	18	457	457.2	4.19	4.78	7.90	9.53	12.70	4.19	6.35		11.13	9.53	14.27		19.05	23.83					39.67	45.24	4		4	6.3	10			
500	20	508	508	4.78	5.54	7.90	9.53	12.70	4.78	6.35		12.70	9.53	15.09		20.62	26.19					44.45	50.01	4		4	6.3	11			
550	22	559	558.8	4.78	5.54		9.53	12.70	4.78	6.35		12.70	9.53		22.23	28.58						47.63	53.98								
600	24	610	609.6	5.54	6.35		9.53	12.70	5.54	6.35		14.27	9.53	17.48		24.61	30.96					52.37	59.54	5		5	6.3	12.5			
650	26	660	660.4							7.92						28.58															
700	28	711	711.2							7.92						30.96															
750	30	762	762	6.35	7.92		9.53	12.70	6.35	7.92																					
800	32	813	812.8							7.92																					
850	34	864	863.6							7.92																					
900	36	914	914.4							7.92																					
950	38	965	965.2							7.92																					
1000	40	1016	1016							7.92																					
1050	42	1067	1067							7.92																					
1100	44	1118	1118							7.92																					
1150	46	1168	1168							7.92																					
1200	48	1219	1219							7.92																					